

# decoflame® Wood Panel wall (A1) 1550x1060x390mm

Montreal, Open to front 1000x400x300mm, Black colour

## Optiones

### Material Panel

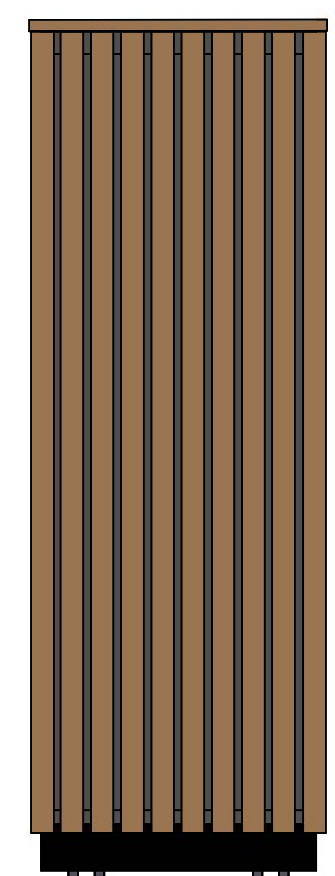
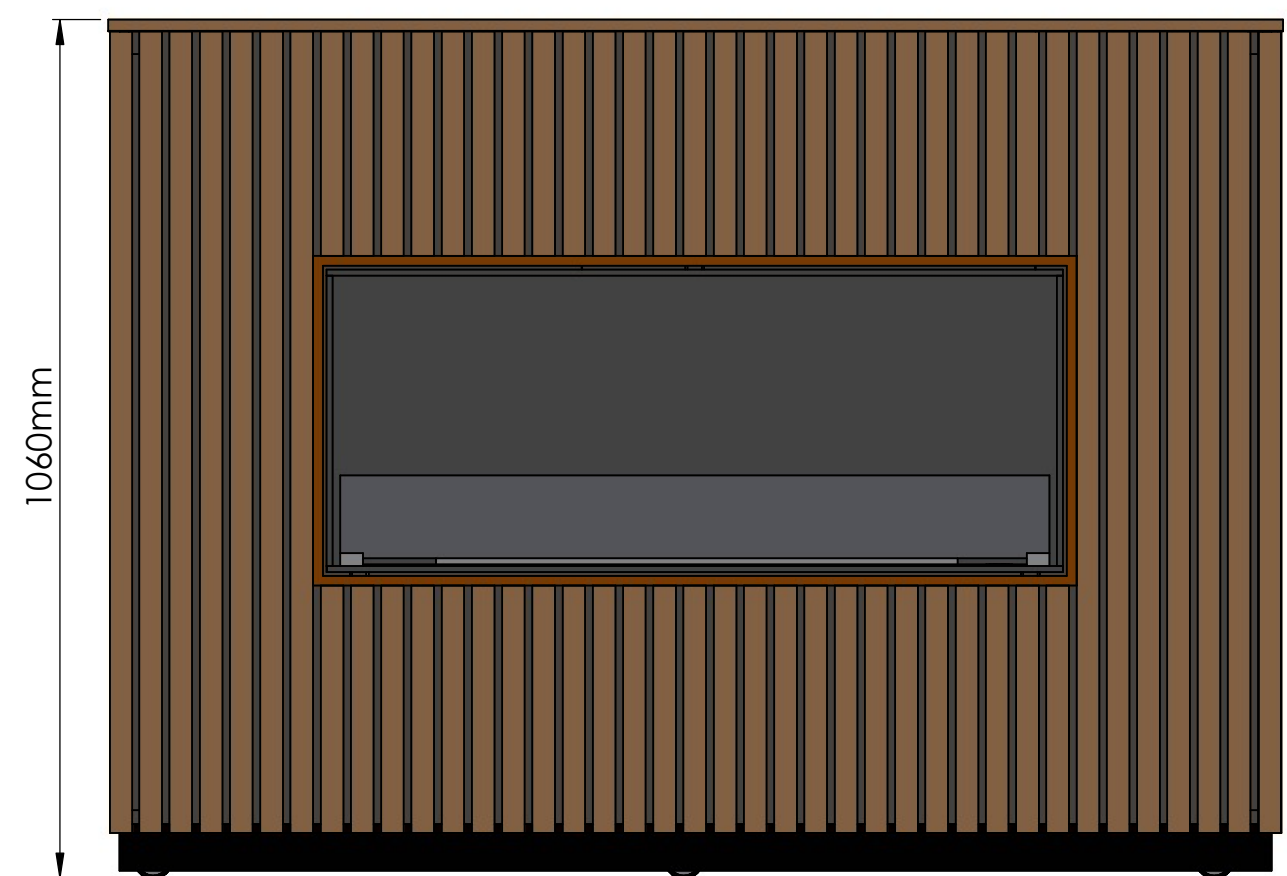
- Black-stained oak
- Oak nature
- Walnut

### Burner

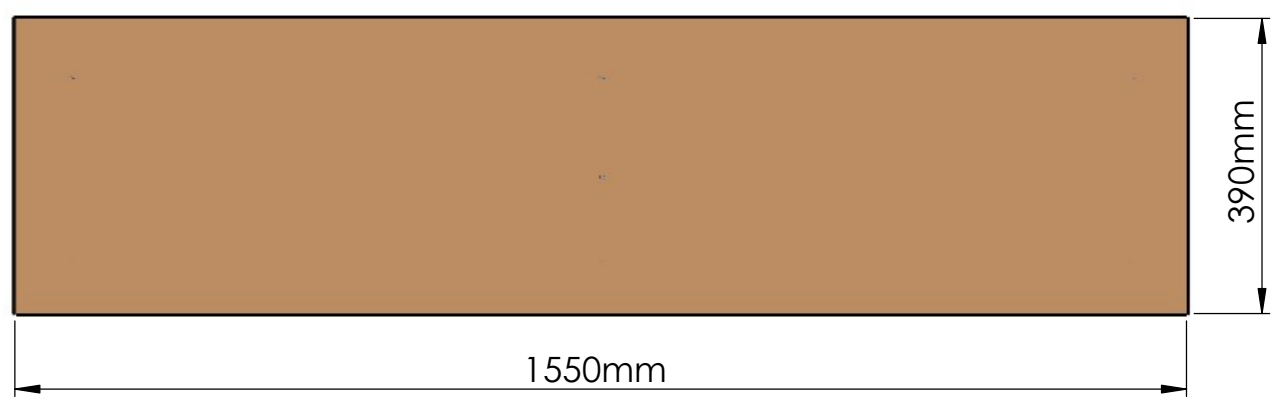
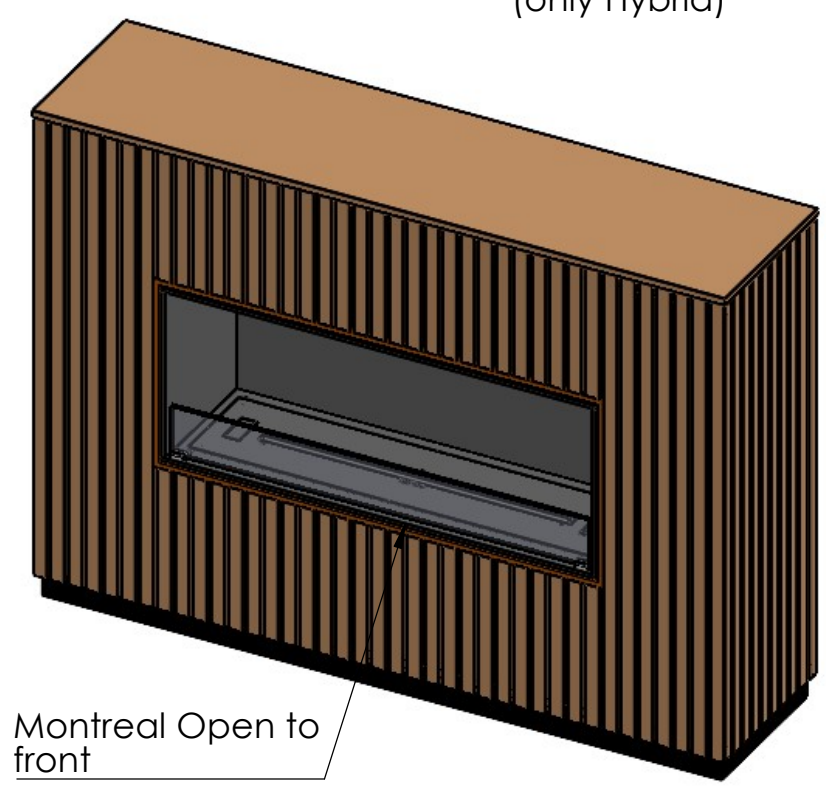
- Denver F3/F6
- Hybrid
- Manual


### Glass

- Clear
- Bronze
- 1x 70mm glass (burner)
- 1x 110mm glass
- 1x Glass door (only Hybrid)



Caster wheels



<b>Dimensions are in millimeters</b>		Decoflame Aps Vang Mark 2 9380 Vestbjerg Denmark Tlf: +45 9630 4800 	<b>SCALE: 1:10</b>
Date	20-06-2024		FORMAT: A3
REVISION:	-	bestilling@decoflame.dk	Page 1 OF 1
Author:	JDR	Order Number - Customer - Reference:	
Copyright of Decoflame ApS Denmark, whose property this document remains. No part thereof may be disclosed, copied, duplicated or in any other way made use of, except with the approval of Decoflame ApS.		PRINCIPLE Panel wall A1 1550x1060x390mm m. Montreal F	
		Customer Approval Signature - Date	